

CPS Foundation Shield

Protect your foundation and insulation and increase the energy efficiency of your home with our easy to install system.

Foundation Shield is designed for installation over foundations as an extra barrier of protection against moisture and insects, trapping the energy used to heat and cool your home. According to DOE published literature, heat loss from an un-insulated, conditioned basement may represent up to 50% of a home's total heat loss. Since concrete offers little resistance to heat loss, it is recommended by the DOE to insulate your home's foundation. Foundation Shield can significantly reduce your home's heat loss and provide a durable, attractive, and cost-effective finish for your foundation insulation project.

**Thank you for choosing
Creative Panel Solutions!**

Be sure to check out these other fine product offerings from Creative Panel Solutions:

- ✓ V-Plank
- ✓ Structural Insulated (SIP) Panels
- ✓ Fluted Core
- ✓ Metal Poly Panels
- ✓ Wall Shield Products
- ✓ Laminated FRP Products
- ✓ Laminated HDPE Products
- ✓ FRP Liner Panels
- ✓ Fire Rated FRP Liner Panels
- ✓ HDPE Liner Panels
- ✓ Vinyl Moldings and Accessories
- ✓ Aluminum Moldings and Accessories
- ✓ Caulks and Adhesives
- ✓ Agricultural Door Systems



46271 184th Street
Castlewood, SD 57223
1-888-295-6330
1-605-793-2356 fax
www.creativepanelsolutions.com



Foundation Shield



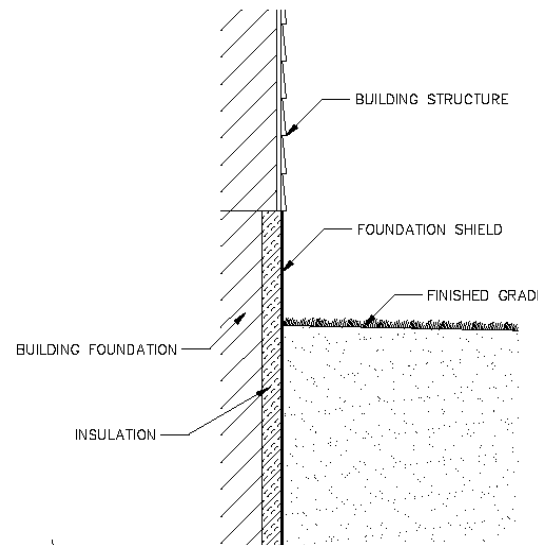
**46271 184th Street
Castlewood, SD 57223
1-888-295-6330
1-605-793-2356 fax
www.creativepanelsolutions.com**

Product Features

- ✓ *Attractive Textured Gray or Taupe finish complements the color of any home.*
- ✓ *Foundation Shield is available in rolls 16", 24", or 48" wide x 50' long*
- ✓ *Pest and insect resistant*
- ✓ *Highly moisture resistant*
- ✓ *Resists stains and odors*
- ✓ *Durable and shatter resistant*
- ✓ *Install the panels directly over solid walls or insulation*
- ✓ *Full array of fasteners, trims, and adhesives available for professional installation*

*Visit our website @
www.creativepanelsolutions.com
for more information.*

**46271 184th Street
Castlewood, SD 57223
1-888-295-6330
1-605-793-2356 fax
www.creativepanelsolutions.com**



*A full array of moldings are available for joints and corners.
Please call for details.*

Installation Instructions

Installing Foundation Shield is simple and cost-effective. To dramatically improve the efficiency of your home's foundation, simply follow these simple instructions.

1. Attach the top of the Foundation Shield panel using Nylon Mechanical Fasteners.
2. Allow for expansion and contraction when drilling entry holes for fasteners.
3. Back fill the bottom (below grade) of the Foundation Shield panel to complete the installation.
4. Caulk as required for additional sealing.

Note: Panel attachment using adhesives is also acceptable. Please check with the foam insulation supplier as to the compatibility of the foam and adhesive.